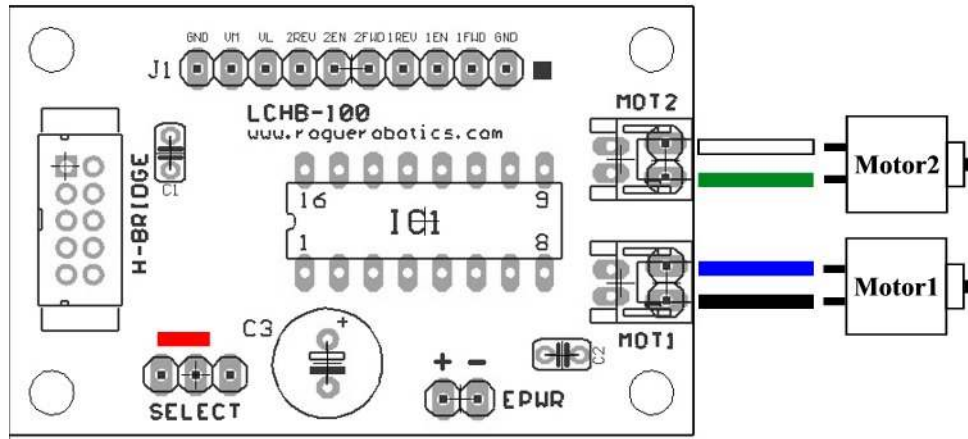


# Rogue Robotics

## LCHB-100 Instruction Manual

Revision: B3

*Inputs are labeled on the board silkscreen*



The EPWR connector can be used as a secondary power source for V+/VM. If it is used, the SELECT jumper should be moved to the position closing the two pins closest to C3.

When connecting the wires from the LCHB to the motors on the Rogue ATR:

- White wire connects to TOP terminal on LEFT motor.
- Green wire connects to BOTTOM terminal on LEFT motor.
- Blue wire connects to BOTTOM terminal on RIGHT motor.
- Black wire connects to TOP terminal on RIGHT motor.

**ERRATA: VERY IMPORTANT – The VM and VL pads on the Revision B3 of the LCHB-100 are transposed. The actual pin-out along the top of Revision B3 LCHB-100 should be as follows:**

**GND, VL, VM, 2REV, 2EN, 2FWD, 1REV, 1EN, 1FWD, GND**

**This does not affect owners of the ATR ERS since they use the H-Bridge connector.**

Please see the documentation on the SN754410 Quadruple Half-H Driver for more information (<http://www.roguerobotics.com/products/motorcontrol/SN754410.pdf>).

**Document Version:**  
**1.01**